

STIK

**AUGDABRA**<sup>®</sup>

PROFESSIONAL INTERIOR LIGHTING

Made in Italy



IT-EN

**Concept & Graphic Project:**  
Studio Asia S.r.l. (Milano) di Baratelli Arch. Carla  
info@studioasia.it

**Settings and Renderings:**  
Ambra Gadda (New York)  
ambragadda@gmail.com

**THANKS TO:**  
Davide Tortora

**ALDABRA**  
PROFESSIONAL INTERIOR LIGHTING



OPUSCOLO / *BROCHURE*

**STIK**

[www.aldabra.it](http://www.aldabra.it)  
[www.aldabrausa.com](http://www.aldabrausa.com)

STIK

PATENT  
PENDING

Made in Italy



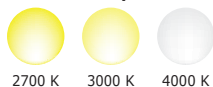
Sistema di illuminazione innovativo brevettato a luce LED lineare modulare per montaggio tramite cavi tesati o barre elettrificate. Emissione di luce diretta o diretta/indiretta dimmerabile con regolazione del flusso. Il sistema può essere equipaggiato anche con spot da agganciare alle barre luminose.

- **Applicazione:** tramite cavi tesati orizzontali o verticali con fissaggio parete/parete - parete/soffitto - soffitto/pavimento o barre rigide sospese a soffitto
- **Ambientazione:** hotel, musei, uffici, abitazioni, ingressi, biblioteche, chiese, illuminazione di soffitti affrescati o in legno
- **Installazione:** in appoggio su cavi o su barre rigide
- **Materiale:** alluminio - polycarbonato - acciaio inox - rame
- **Finiture:** barre: alluminio anodizzato - alluminio anodizzato nero - alluminio anodizzato champagne  
spot: alluminio anodizzato, alluminio anodizzato nero
- **Sorgente LED:** barre: mid Power LED 90-110 lm/W  
Spot: COB LED 130 lm/W  
Microspot: High Power LED 120-130 lm/W
- **Ottiche:** spot: 15° - 25° - 46°  
barre: schermo satinato, schermo antiabbagliante
- **Funzionamento:** accensione on-off o dimmerabile
- **Caratteristiche:** barra luminosa tutta luce - reversibilità e sovrapponibilità dei moduli
- **Alimentazione:** tensione costante 24 Vdc

*Innovative patented modular linear LED lighting system for mounting with cables or electrified bars. Direct or direct/indirect dimmable emission with adjustment of the flow. The system can also be equipped with spots to clip on lighting bars.*

- **Applications:** by means of horizontal or vertical cables with wall/wall - wall/ ceiling - ceiling/ floor fixing or rigid bars suspended from the ceiling
- **Settings:** hotels, museums, offices, houses, lobbies, halls, libraries, churches, lighting of frescoed or wooden ceilings
- **Installation:** mounted on cables or rigid bars
- **Materials:** aluminium - polycarbonate - stainless steel - copper
- **Finishes:** bars: anodized aluminium - black anodized aluminium - champagne anodized aluminium  
spot: anodized aluminium, black anodized aluminium
- **LED Light source:** bars: mid Power LED 90-110 lm/W  
Spot: COB LED 130 lm/W  
Microspot: High Power LED 120-130 lm/W
- **Optics:** spot: 15° - 25° - 46°  
bars: satin diffuser, louver
- **Functions:** on-off or dimmable
- **Features:** full light reversible and overlapping bars
- **Power supply:** 24 Vdc constant voltage

#### Colori LED / LED Colours



2700 K 3000 K 4000 K

#### Caratteristiche / Features

IP40 IP44 IK05 750°C

Ra  
>90













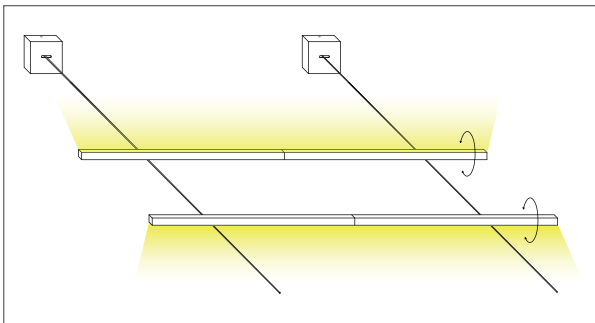
Made in Italy

90 - 110  
lm/W

## STIK MID POWER LED 24 Vdc MONOEMISSIONE / MONOEMISSION

example *STI.01.S30M1.0*

lunghezza length [mm + in]	potenza power [W]	codice code	+ ottiche optics	+ colori LED LED colours	+ finiture finishes	+ revisione release
1020 (40,157")	20	<b>STI.01</b>	.S  schermo satinato satin screen	27  warm white 2700 K	A1  alluminio anodizzato naturale natural anodized aluminium	.0
1520 (59,842")	30	<b>STI.03</b>				
1020 (40,157")	20	<b>STI.08</b>	.P  schermo antiabbagliante louver	30  warm white 3000 K	B3  alluminio anodizzato nero black anodized aluminium	
1520 (59,842")	30	<b>STI.09</b>				
				40  neutral white 4000 K	Z2  alluminio anodizzato champagne champagne anodized aluminium	



Installazione dei moduli monoemissione a luce diretta o indiretta  
Monoemission modules installation with direct or indirect light

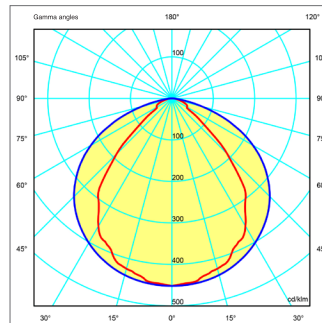


Diagramma schermo satinato  
Satin screen diagram

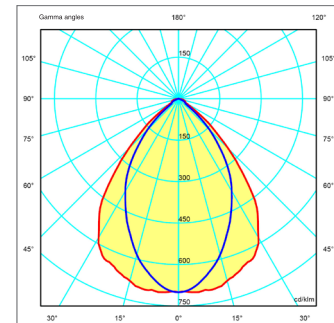


Diagramma griglia antiabbagliamento  
Anti-glare grid diagram  
UGR<19



Dettaglio schermo antiabbagliante - UGR<19  
Louver detail



Dettaglio schermo antiabbagliante - UGR<19  
Louver detail

### Importante / Remarks:

Alimentazione a tensione costante 24 Vdc, collegamento in parallelo / 24 Vdc constant voltage supply, parallel connection

Il sistema può supportare un carico massimo totale di 300 W / System maximum load is 300 W

Altre finiture disponibili a richiesta, vedi pagina 18 / other finishes available on demand, see page 18

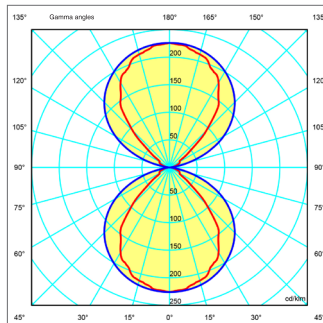
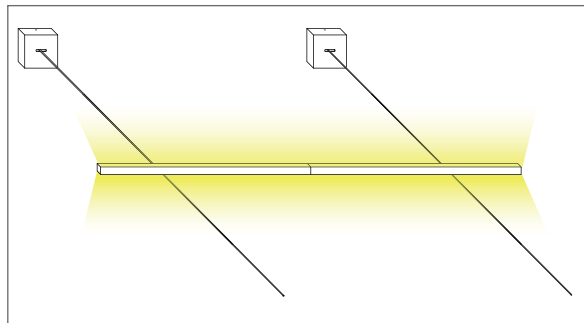


90 - 110  
lm/W



**STIK MID POWER LED 24 Vdc BIEMISSIONE SIMMETRICA / SYMMETRICAL BIEMISSION** *example STI.05.S27M2.0*

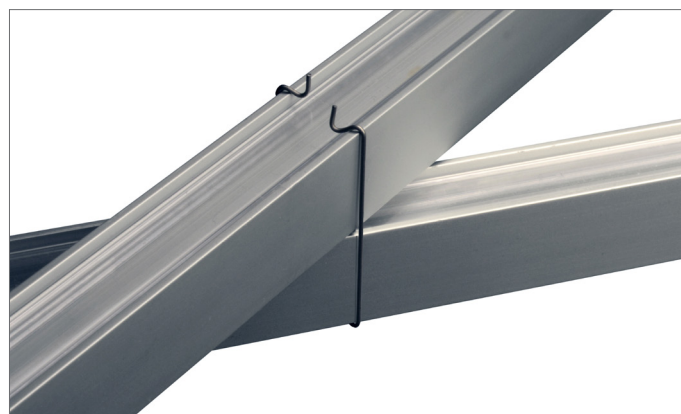
lunghezza length [mm + in]	potenza power [W]	codice code	+ ottiche optics	+ colori LED LED colours	+ finiture finishes	+ revisione release
1020 (40,157")	40	<b>STI.05</b>	.S schermo satinato satin screen	<b>27</b> warm white 2700 K	<b>A1</b> alluminio anodizzato naturale natural anodized aluminium	<b>.0</b>
1520 (59,842")	60	<b>STI.06</b>		<b>30</b> warm white 3000 K		
				<b>40</b> neutral white 4000 K	<b>B3</b> alluminio anodizzato nero black anodized aluminium	
					<b>Z2</b> alluminio anodizzato champagne champagne anodized aluminium	



Installazione dei moduli a luce doppia emissione simmetrica con possibilità di regolazione del flusso.  
Installation of double symmetrical emission light modules with flux regulation option.



Dettaglio della molla di fissaggio lampada - cavo  
Lamp to cable fixing spring detail



Dettaglio della molla di fissaggio lampada - lampada  
Lamp to lamp fixing spring detail

**Importante / Remarks:**

Alimentazione a tensione costante 24 Vdc dimmerabile, collegamento in parallelo / 24 Vdc dimmable constant voltage supply, parallel connection  
Il sistema può supportare un carico massimo totale di 300 W / System maximum load is 300 W  
Altre finiture disponibili a richiesta, vedi pagina 18 / other finishes available on demand, see page 18

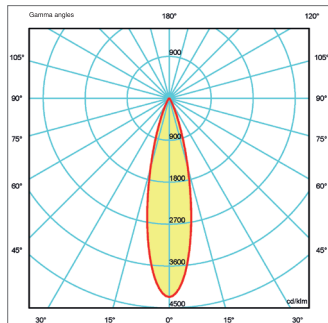
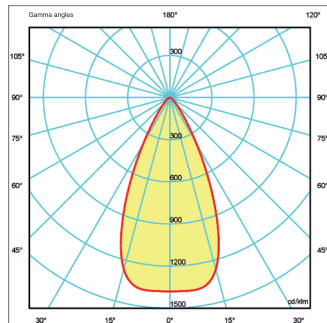
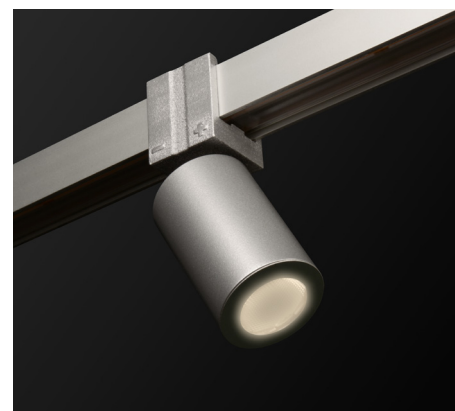
Made in Italy

120 - 130  
lm/W

## STIK MICROSPOT 31 HIGH POWER LED 5 W 24 Vdc

example **STI.90.F40G1.0**

versione version	potenza total power [W]	codice code	+	ottiche optics	+	colori LED LED colours	+	finiture finishes	+	revisione release
Microspot 31	5	<b>STI.90</b>		<b>.F</b> medium beam 25°		<b>27</b> warm white 2700 K		<b>A1</b> alluminio anodizzato naturale natural anodized aluminium		<b>.0</b>
				<b>.W</b> wide beam 46°		<b>30</b> warm white 3000 K		<b>B3</b> alluminio anodizzato nero black anodized aluminium		
						<b>40</b> neutral white 4000 K				

Diagramma ottica fascio medio  
Medium beam optics diagramDiagramma ottica fascio largo  
Wide beam optics diagramRotazione 350° - orientabilità ± 32°  
Rotation 350° - adjustability ± 32°**Importante / Remarks:**Alimentazione a tensione costante 24 Vdc, collegamento in parallelo / 24 Vdc constant voltage supply, parallel connection  
Il sistema può supportare un carico massimo totale di 300 W / System maximum load is 300 W





130  
lm/W



**STIK SPOT 55 COB LED 10 W 24 Vdc**

example *STI.91.F40G1.0*

versione version	potenza total power [W]	codice code	+	ottiche optics	+	colori LED LED colours	+	finiture finishes	revisione release
Spot 55	10	<b>STI.91</b>		<b>.M</b> narrow beam 15°		<b>27</b> warm white 2700 K		<b>A1</b> alluminio anodizzato naturale natural anodized aluminium	<b>.0</b>
				<b>.F</b> medium beam 25°		<b>30</b> warm white 3000 K		<b>B3</b> alluminio anodizzato nero black anodized aluminium	
				<b>.W</b> wide beam 46°		<b>40</b> neutral white 4000 K			

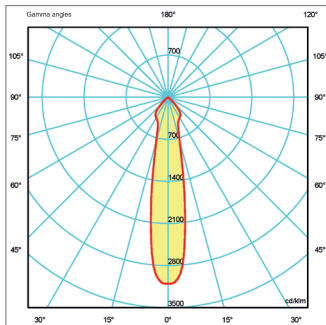


Diagramma ottica fascio stretto  
Narrow beam optics diagram

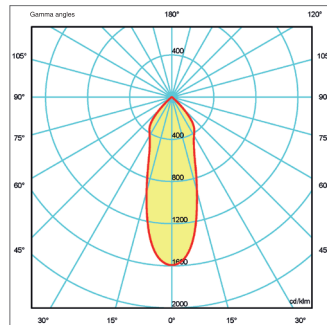


Diagramma ottica fascio medio  
Medium beam optics diagram

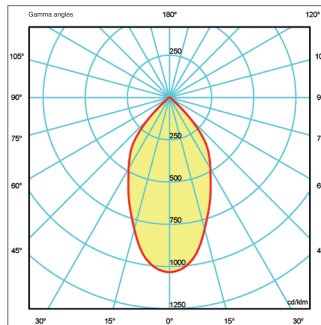
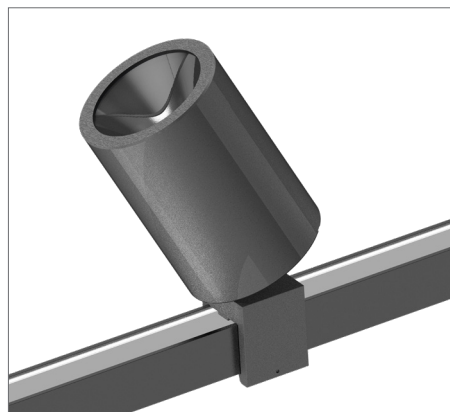


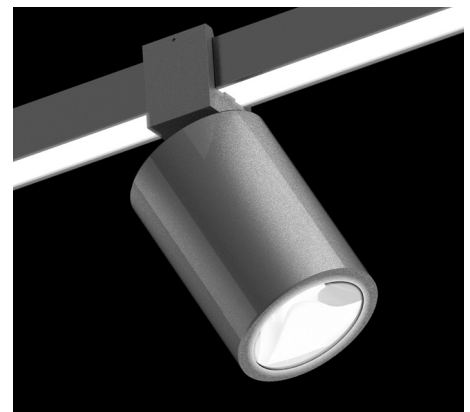
Diagramma ottica fascio largo  
Wide beam optics diagram



Rotazione 350° - orientabilità ± 35°  
Rotation 350° - adjustability ± 35°



Spot rivolto verso il soffitto  
Spot installed facing the ceiling



**Importante / Remarks:**

Alimentazione a tensione costante 24 Vdc, collegamento in parallelo / 24 Vdc constant voltage supply, parallel connection  
Il sistema può supportare un carico massimo totale di 300 W / System maximum load is 300 W



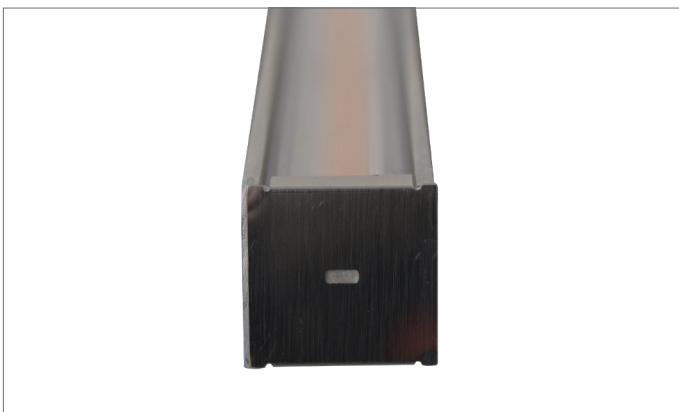
Made in Italy

106 - 127  
lm/W**STIK 32 SHORT MID POWER LED 24 Vdc MONOEMISSIONE / MONOEMISSION**example **STI.07.S30A1.0**

lunghezza length [mm + in]	potenza power [W]	codice code	+ ottiche optics	+ colori LED LED colours	+ finiture finishes	+ revisione release
320 (12,598")	6	<b>STI.07</b>	<b>.S</b> schermo satinato satin screen	<b>27</b> warm white 2700 K <b>30</b> warm white 3000 K <b>40</b> neutral white 4000 K	<b>A1</b> alluminio anodizzato naturale natural anodized aluminium <b>B3</b> alluminio anodizzato nero black anodized aluminium <b>Z2</b> alluminio anodizzato champagne champagne anodized aluminium	<b>.0</b>

**STIK 32 SHORT BARRA STRUTTURA / STRUCTURE BARS**example **STI.10.S00A1.0**

lunghezza length [mm + in]	codice code	+ finiture finishes	+ revisione release
320 (12,598")	<b>STI.10.S00</b>	<b>A1</b> alluminio anodizzato naturale natural anodized aluminium <b>B3</b> alluminio anodizzato nero black anodized aluminium <b>Z2</b> alluminio anodizzato champagne champagne anodized aluminium	<b>.0</b>

Polo negativo della barra  
Negative pole of the barPolo positivo della barra  
Positive pole of the bar**Importante / Remarks:**

Alimentazione a tensione costante 24 Vdc, collegamento in parallelo / 24 Vdc constant voltage supply, parallel connection  
 Il sistema può supportare un carico massimo totale di 300 W / System maximum load is 300 W

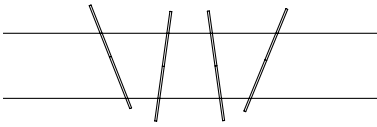


## COMPOSIZIONI PRONTE IN KIT / PRE SET KITS

## STIK KIT 4/100 A1 MONOEMISSIONE / MONOEMISSION

Codice / Code: **STI.40.S30A1.0**  
**STI.41.S30A1.0**

kit tenditore Basic / *Basic stretcher kit*  
 kit tenditore Design / *Design stretcher kit*



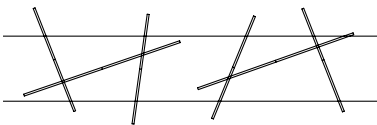
Kit Stik composto da 4 barre luce monoemissione in alluminio anodizzato da 1020 mm 80 W 24 Vdc 3000 K schermo satinato. Completo di 15 m di cavo, 2 basi di fissaggio e kit tenditore (alimentatore escluso, vedi pag. 16-17).

*Stik kit with 4 monoemission light bars in anodized aluminum 1020 mm long 80 W 24 Vdc 3000 K satin screen. Complete with 15 m of cable, 2 fixing bases and stretcher kit (power supply excluded, see pages 16-17).*

## STIK KIT 6/100 A1 MONOEMISSIONE / MONOEMISSION

Codice / Code: **STI.60.S30A1.0**  
**STI.61.S30A1.0**

kit tenditore Basic / *Basic stretcher kit*  
 kit tenditore Design / *Design stretcher kit*



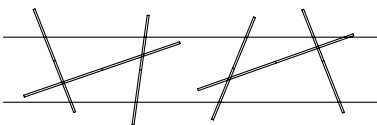
Kit Stik composto da 6 barre luce monoemissione in alluminio anodizzato da 1020 mm 120 W 24 Vdc 3000 K schermo satinato. Completo di 15 m di cavo, 2 basi di fissaggio e kit tenditore (alimentatore escluso, vedi pag 16-17).

*Stik kit with 6 monoemission light bars in anodized aluminum 1020 mm long 120 W 24 Vdc 3000 K satin screen. Complete with 15 m of cable, 2 fixing bases and stretcher kit (power supply excluded, see pages 16-17).*

## STIK KIT 6/100 A1 BIEMISSIONE / BIEMISSION

Codice / Code: **STI.65.S30A1.0**  
**STI.66.S30A1.0**

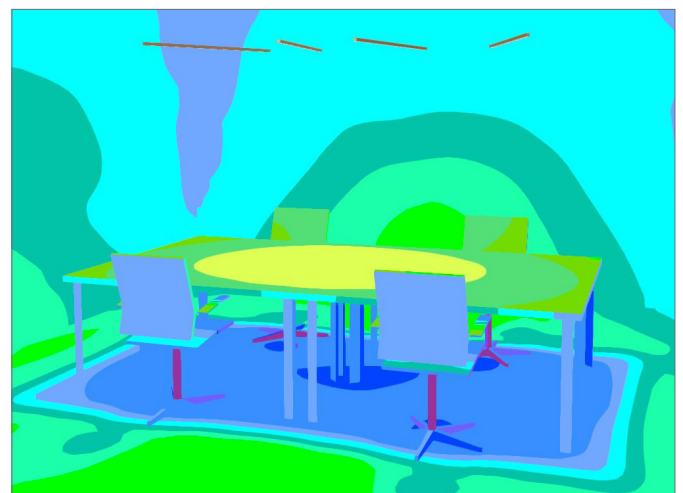
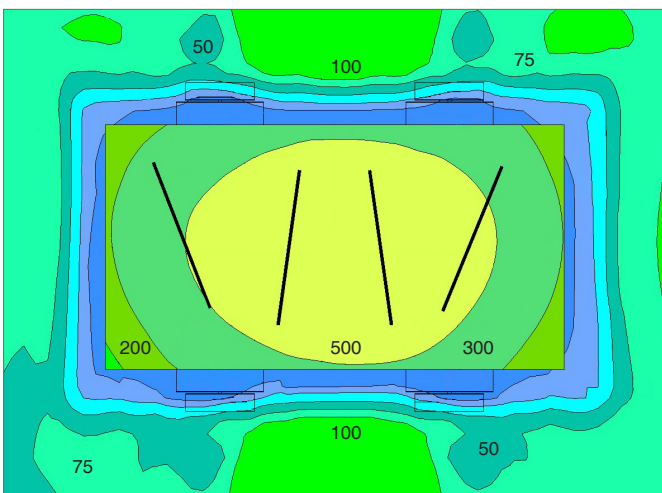
kit tenditore Basic / *Basic stretcher kit*  
 kit tenditore Design / *Design stretcher kit*



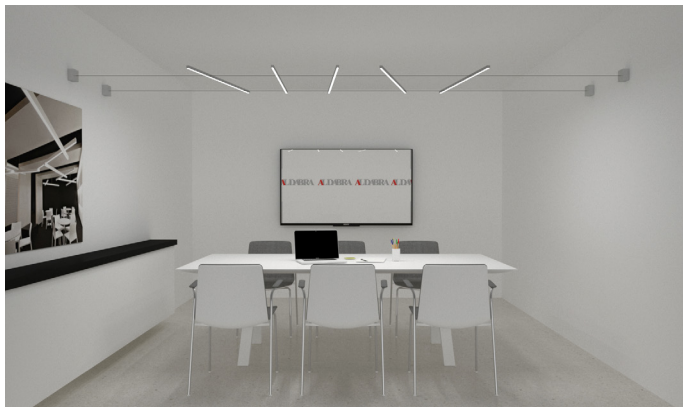
Kit Stik composto da 6 barre luce biemissione in alluminio anodizzato da 1020 mm 240 W 24 Vdc 3000 K schermo satinato. Completo di 15 m di cavo, 2 basi di fissaggio e kit tenditore (alimentatore escluso, vedi pag 16-17).

*Stik kit with 6 biemission light bars in anodized aluminum 1020 mm long 240 W 24 Vdc 3000 K satin screen. Complete with 15 m of cable, 2 fixing bases and stretcher kit (power supply excluded, see pages 16-17).*

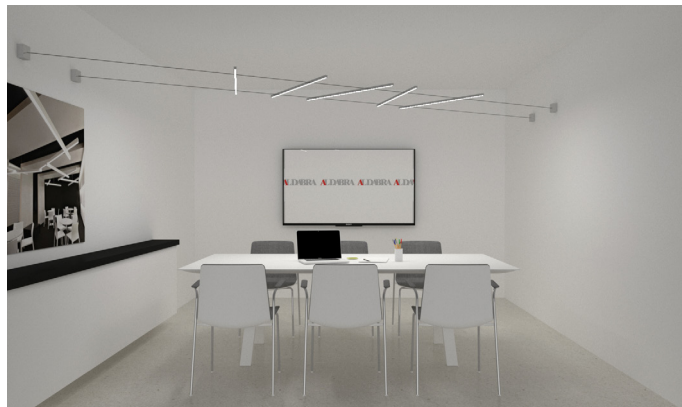
SIMULAZIONE VALORI LUX DEL KIT 4/100 A1 MONOEMISSIONE (4000 K)  
 KIT 4/100 A1 MONOEMISSION LUX VALUE SIMULATION (4000 K)



## ESEMPI DI INSTALLAZIONE / INSTALLATION EXAMPLES



Installazione parete - parete  
Wall - wall installation



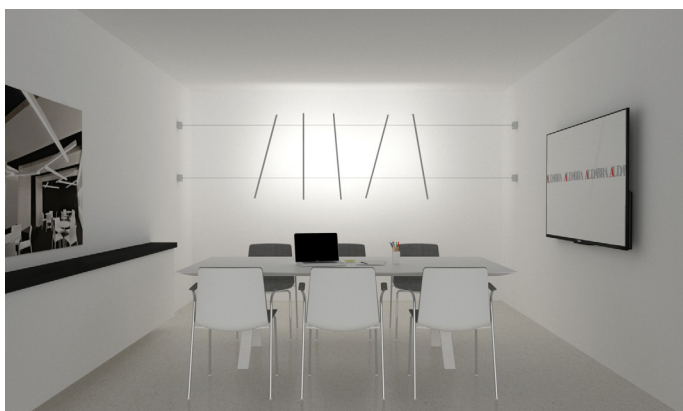
Installazione parete - parete non ortogonali  
Non orthogonal wall - wall installation



Installazione parete - parete inclinata  
Wall - sloped wall installation



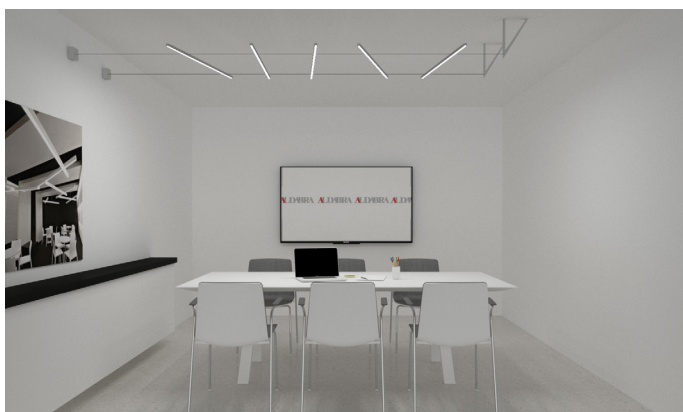
Installazione parete - parete su multi cavi  
Wall - wall installation on multi cables



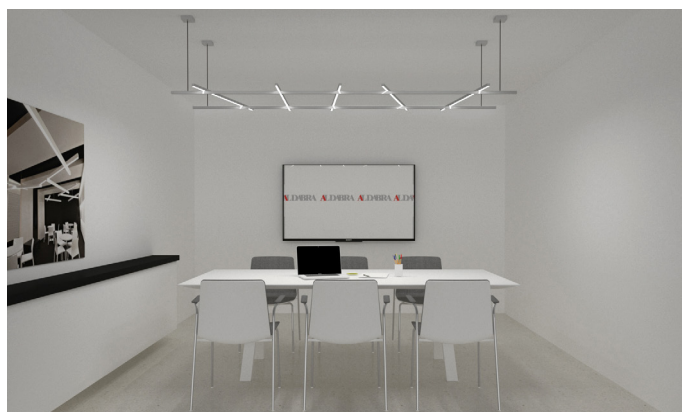
Installazione parete - parete con illuminazione indiretta verticale  
Wall - wall installation with vertical indirect lighting



Installazione pavimento - soffitto con illuminazione indiretta verticale  
Floor - ceiling installation with vertical indirect lighting

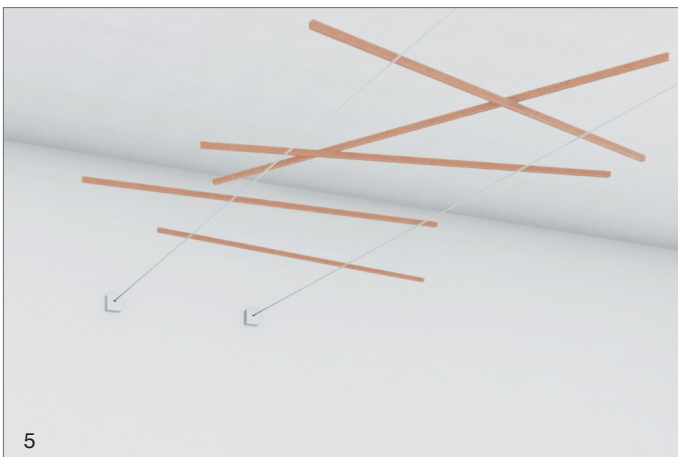
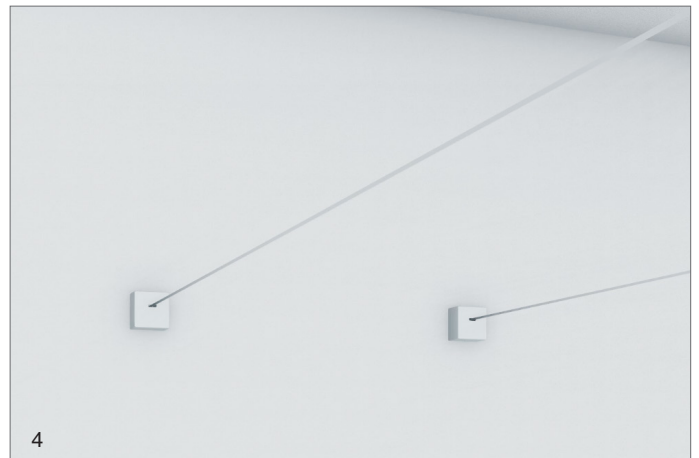
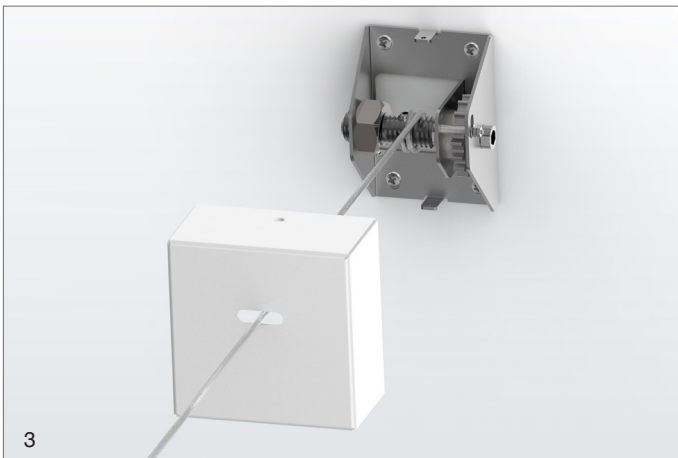
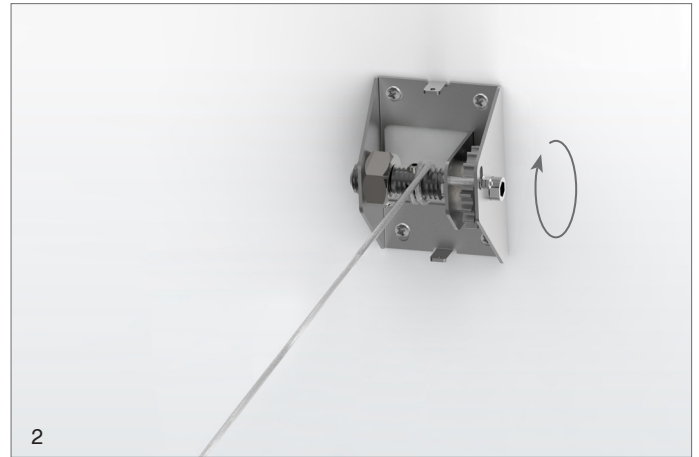
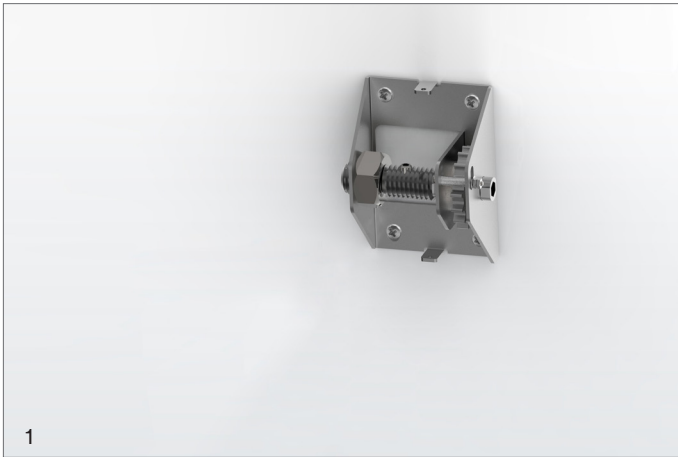


Installazione parete + staffe a soffitto  
Wall + ceiling brackets installation



Installazione a soffitto su barre portanti  
Ceiling installation on supporting bars

## SEQUENZA DI INSTALLAZIONE / INSTALLATION SEQUENCE



Dettaglio del cavo in acciaio e rame  
Steel and copper cable detail



Kit tenditore Basic  
Basic stretcher kit



Connessione di alimentazione  
Power supply connection





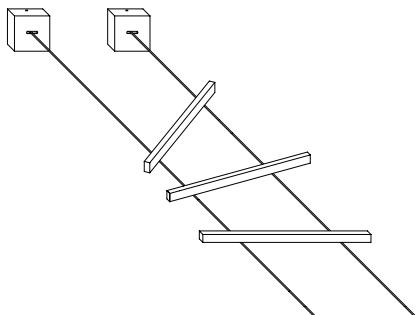




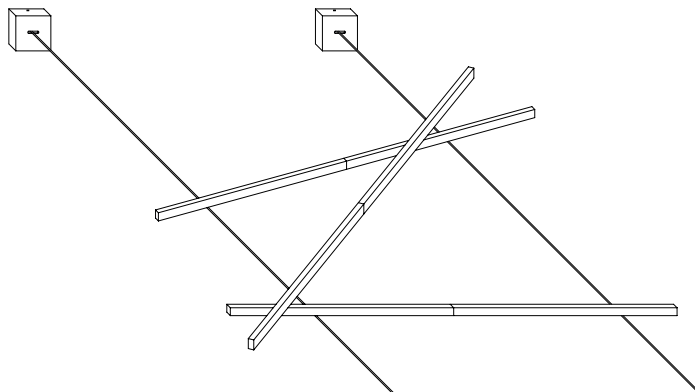
## DISTANZA CONSIGLIATA DEI CONDUTTORI / RECOMMENDED CABLE GAP

- Barre luce 320 mm / (12,598") lighting bars: min 150 mm (5,9") ÷ max 220 mm (8,7")
- Barre luce 1020 mm / (40,157") lighting bars: min 400 mm (16") ÷ max 900 mm (35")
- Barre luce 1520 mm / (59,842") lighting sticks: min 500 mm (20") ÷ max 1400 mm (55")

150 ÷ 220  
(5,9" ÷ 8,7")



400 ÷ 900 / 500 ÷ 1400  
(16" ÷ 35" / 20" ÷ 55")



### Note / Notes:

Sovrapporre al massimo 2 barre luce.

Lunghezza massima dei cavi consigliata 20 metri.

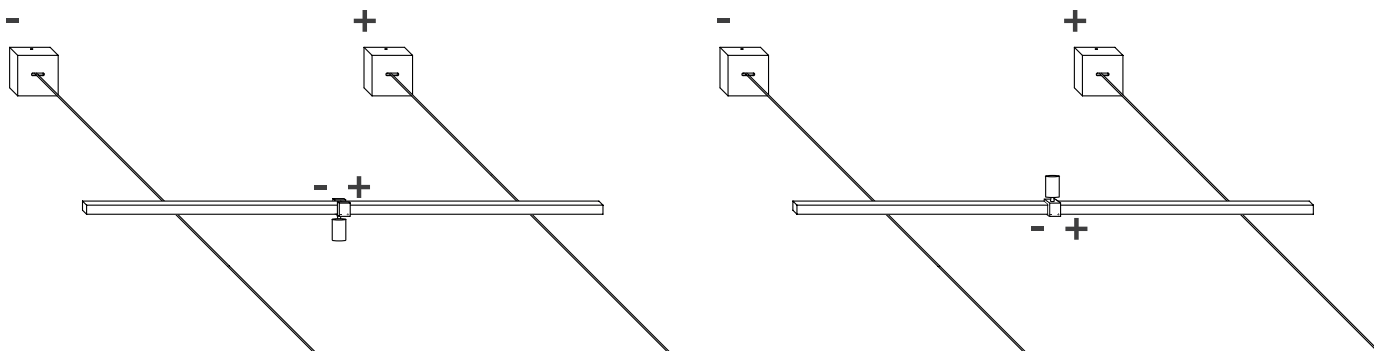
La tensione dei cavi è in funzione del materiale della parete. Tendere meno i cavi non compromette il funzionamento o la portata del cavo ma impatta solo esteticamente sul cavo che crea una freccia.

Overlap a maximum of 2 light bars.

Cable maximum recommended length 20 meters (66 ft).

Cable tensioning has to be determined according to the wall material type. Under tensioning will not affect fixture operations or cable load capacity but may have an aesthetical effect due to cable flexion.

## INSTALLAZIONE DEI PROIETTORI / SPOTS INSTALLATION



### Nota / Note:

I proiettori Spot 55 e Microspot 31 devono essere installati a cavallo del giunto centrale nella mezziera della barra.

Spot 55 and Microspot 31 projectors must be installed over the central joint in the center of the bar.

## FINITURE DISPONIBILI / AVAILABLE FINISHES



Alluminio anodizzato  
Anodized aluminium



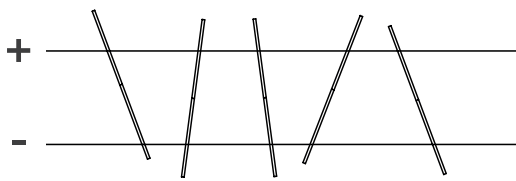
Alluminio anodizzato nero  
Black anodized aluminium



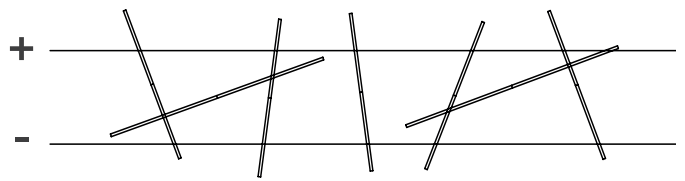
Alluminio anodizzato champagne  
Champagne anodized aluminium

ESEMPI DI COMPOSIZIONI / COMPOSITIONS EXAMPLES

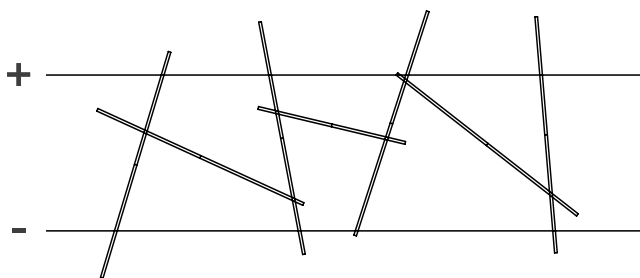
Esempi di montaggio su cavi / cable mounting examples



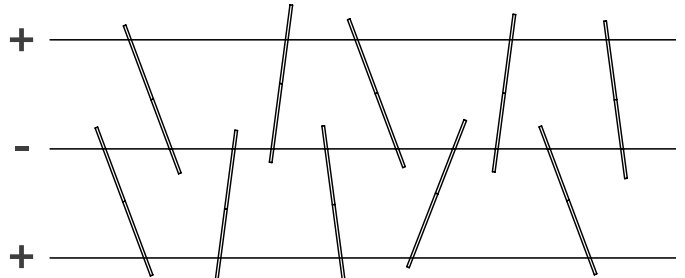
Barre luce da 1020 mm  
1020 mm light bars



Barre luce da 1020 mm sovrapposte  
1020 mm light bars overlapping

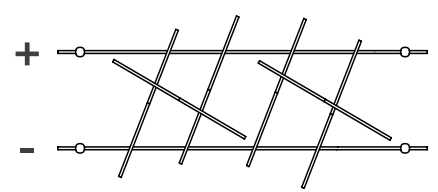
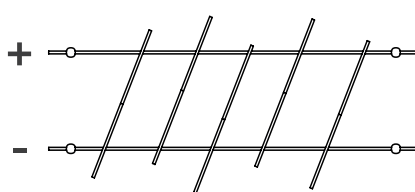
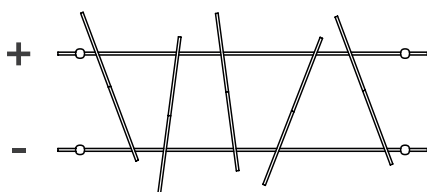


Barre luce da 1520 mm sovrapposte  
1520 mm light bars overlapping



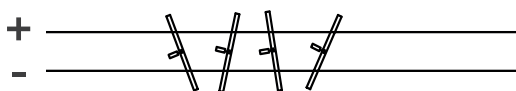
Barre luce da 1020 mm su multi cavi  
1020 mm light bars on multi cables

Esempi di montaggio su barre portanti / supporting bars mounting examples

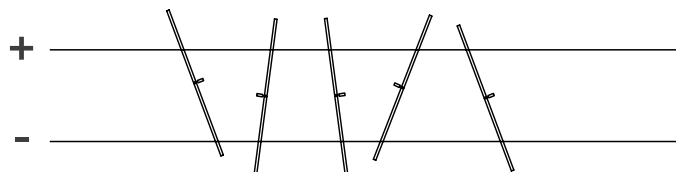


Barre luce da 1020 mm su barre portanti / 1020 mm light bars on supporting bars

Esempi di montaggio con Microspot 31 e Spot 55 / Microspot 31 and Spot 55 mounting examples

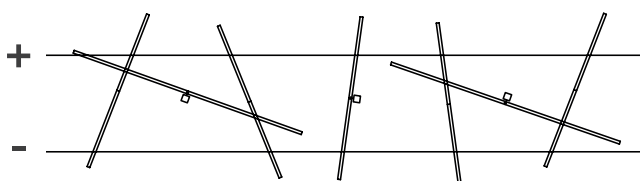


Barre luce da 320 mm con Microspot 31  
320 mm light bars with Microspot 31

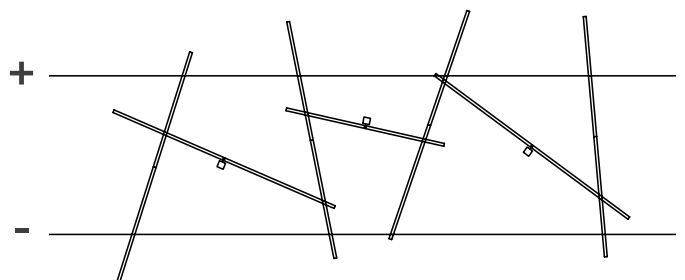


Barre luce da 1020 mm con Microspot 31  
1020 mm light bars with Microspot 31

Esempi di montaggio con Spot 55 / Spot 55 mounting examples



Barre luce da 1020 mm sovrapposte con Spot 55  
1020 mm light bars overlapping with Spot 55



Barre luce da 1520 mm sovrapposte con Spot 55  
1520 mm light bars overlapping with Spot 55

## SCHEDA TECNICA STIK

<b>Corpo</b>	alluminio 6060
<b>Schermo</b>	polycarbonato
<b>Finitura corpo</b>	barre: alluminio anodizzato naturale, alluminio anodizzato nero, alluminio anodizzato champagne - Spot 55 e Microspot 31: alluminio anodizzato nero, alluminio anodizzato champagne
<b>Ottica</b>	spot: narrow beam (15°) - medium beam (25°) - wide beam (46°) - barre: schermo satinato, schermo antiabbagliante
<b>Viteria</b>	acciaio inox
<b>Testate</b>	acciaio inox
<b>Installazione</b>	barre: in sospensione a parete o soffitto su cavi tesati o barre elettrificate - Spot 55 e Microspot 31: agganciati alle barre
<b>Cavi di alimentazione</b>	cavo in acciaio 3 mm - rivestimento in rame stagnato intrecciato 2 mm <sup>2</sup>
<b>Sorgenti installabili</b>	barre: COB LED - Spot 55: COB LED - Microspot 31: High Power LED
<b>Selezione cromatica</b>	barre: 3-step macAdam - Spot 55 e Microspot 31: 2-step MacAdam
<b>CRI</b>	Ra > 90
<b>Temperatura di colore</b>	2700 K, 3000 K, 4000 K
<b>Alimentazione</b>	tensione costante 24 Vdc (±5%), connessione in parallelo
<b>Potenza assorbita</b>	barre: monoemissione 20 W/m, biemissione 40 W/m - Spot 55: 10 W - Microspot 31: 5 W
<b>Temperatura di funzionamento</b>	-20 ÷ +40 °C
<b>Efficienza luminosa sorgente</b>	barre: mid Power LED 90 - 110 lm/W - Spot 55: COB LED 130 lm/W - Spot 31: High Power LED 120 - 130 lm/W
<b>Flusso medio specifico sorgente</b>	barre: 2200 lm/m (4000 K) - Spot 55: 1100 - 1500 lm - Microspot 31: 440 - 550 lm
<b>Montaggio consigliato</b>	sospensione (parete, soffitto)
<b>Peso</b>	barre: 386 g/m - Spot 55: 250 g - Microspot 31: 65 g
<b>Grado di protezione</b>	IP40, IP44 (Microspot 31 e Spot 55), IK05
<b>Marchi</b>	CE
<b>Normativa</b>	prodotti in conformità alle vigenti norme EN 60598-1; EN 60598-2 e sue parti

## TECHNICAL INFORMATION STIK

<b>Body</b>	aluminium 6060
<b>Screen</b>	polycarbonate
<b>Body finish</b>	bars: natural anodized aluminium, black anodized aluminium, champagne anodized aluminium - Spot 55 and Microspot 31: black anodized aluminium, champagne anodized aluminium
<b>Optics</b>	spot: narrow beam (15°) - medium beam (25°) - wide beam (46°) - bars: satin screen, louver
<b>Screws</b>	stainless steel
<b>End caps</b>	stainless steel
<b>Installation</b>	bars: wall or ceiling suspended with cables or electrified bars - Spot and Microspot: hooked to the bars
<b>Power supply cables</b>	steel cable 3 mm - braided tinned copper coating 2 mm <sup>2</sup>
<b>Available light sources</b>	bars: COB LED - Spot 55: COB LED - Microspot 31: High Power LED
<b>Chromatic selection</b>	bars: 3-step macAdam - Spot 55 and Microspot 31: 2-step MacAdam
<b>CRI</b>	Ra > 90
<b>Colour temperature</b>	2700 K, 3000 K, 4000 K
<b>Power supply</b>	24 Vdc constant voltage (±5%), parallel connection
<b>Power consumption</b>	bars: monoemission 20 W/m, biemission 40 W/m - Spot 55: 10 W - Microspot 31: 5 W
<b>Working temperature</b>	-20 ÷ +40 °C (-4°F ÷ 104°F)
<b>LED luminous efficiency</b>	bars: mid Power LED 90 - 110 lm/W - Spot 55: COB LED 130 lm/W - Microspot 31: High Power LED 120 - 130 lm/W
<b>Average specific source flux</b>	bars: 2200 lm/m (4000 K) - Spot 55: 1100 - 1500 lm - Microspot 31: 440 - 550 lm
<b>Recommended installation</b>	suspended (wall, ceiling)
<b>Weight</b>	bars: 386 g/m (13.6 oz/m) - Spot 55: 250 g (8.82 oz) - Microspot 31: 65 g (2.29 oz)
<b>Protection degree</b>	IP40, IP44 (Microspot 31 and Spot 55), IK05
<b>Markings</b>	CE
<b>Norms</b>	products comply with norms EN 60598-1; EN 60598-2 and its parts

## Importante / Remarks:

La temperatura del metallo in prossimità del LED non deve superare il valore di 90°C

Il prodotto deve essere utilizzato solo con gli alimentatori forniti e consigliati da Aldabra

The metal's temperature near the LED should not exceed 90°C (194 °F)

The product must be used only with the power supplies provided and suggested by Aldabra



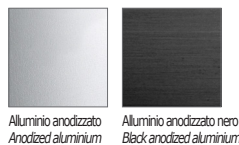
IP44 Solo per Microspot 31 e Spot 55  
Only for Microspot 31 and Spot 55

Finiture barre di serie  
Serial bars finishes

Aluminio anodizzato  
Anodized aluminium

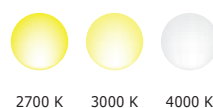
Aluminio anodizzato  
nero  
Black anodized  
aluminium

Aluminio anodizzato  
champagne  
Champagne anodized  
aluminium

Finitura spot  
Spot finish

Aluminio anodizzato  
Anodized aluminium

Aluminio anodizzato nero  
Black anodized aluminium

Colori LED  
LED Colours

2700 K

3000 K

4000 K

## Finiture opzionali barre / Optional bars finishes:

A richiesta per quantità da definire / On request by quantity to be defined



Oro  
Gold

Bronzo chiaro  
Light bronze

Bronzo scuro  
Dark bronze

Rosso  
Red

Verde  
Green

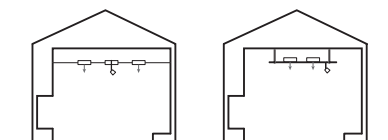
Giallo  
Yellow

Arancio  
Orange

Violetto  
Purple

Blu  
Blue

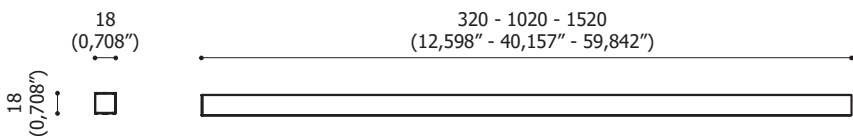
Blu scuro  
Dark blue

Montaggio consigliato  
Recommended installation

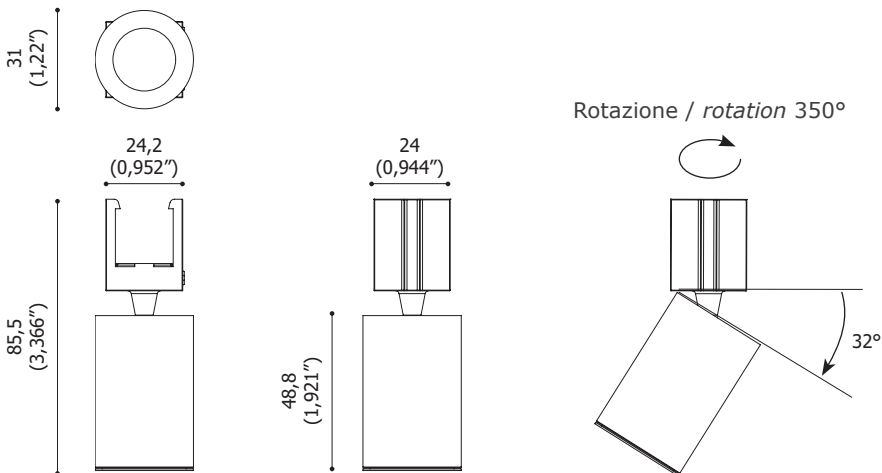
DISEGNI TECNICI / TECHNICAL DRAWINGS

Dimensioni in mm e (in) / Dimensions in mm and (in)

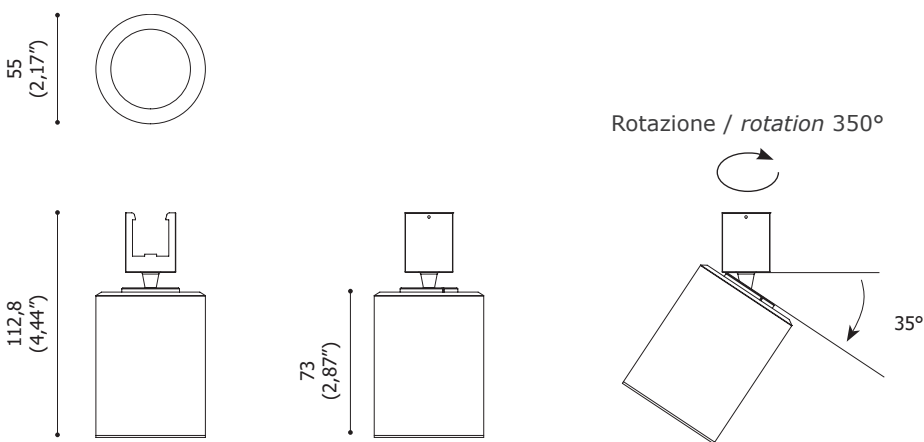
Barra luce / light bar



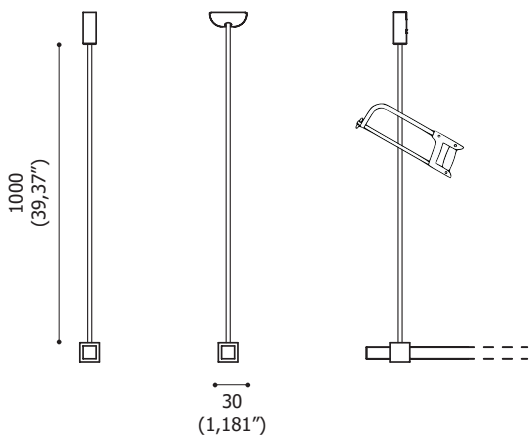
Microspot 31



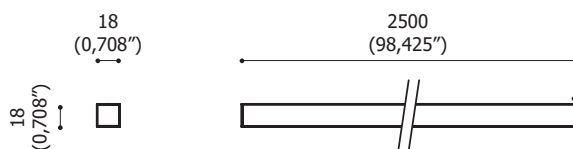
Spot 55



Tige di sospensione / suspension rod



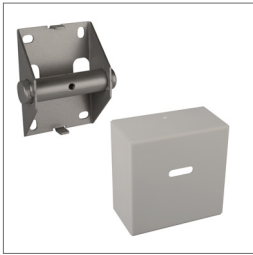
Barra rigida / supporting bar



**Nota:** La tige di sospensione può essere tagliata a misura in sede di cantiere.  
**Note:** The suspension rod can be cut to size on site.

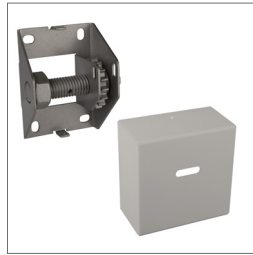
## ACCESSORI / ACCESSORIES

Base Design di ancoraggio per cavi parete o soffitto in acciaio verniciato bianco opaco  
*Anchoring Design base for wall or ceiling cables in matt white painted steel*



Cod. ACC.0321.0

Base Design tenditore per cavi parete o soffitto in acciaio verniciato bianco opaco  
*Stretcher Design base for wall or ceiling cables in matt white painted steel*



Cod. ACC.0322.0

Kit Basic tenditore ed ancoraggio (coppia) per cavi parete - soffitto in acciaio zincato  
*Basic stretcher and anchoring kit (couple) for cables wall - ceiling in galvanized steel*



Cod. ACC.0338.0

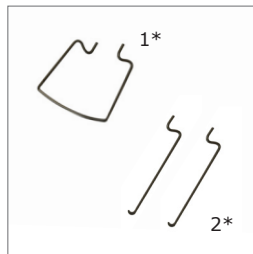
Cavo tirante in rame nichelato - acciaio 3 mm 20 Ampere  
*Tie-rod in nickeled copper - steel 3 mm 20 Ampere*



Cod. ACC.0323.0 15 metri / metres

Cod. ACC.0324.0 50 metri / metres

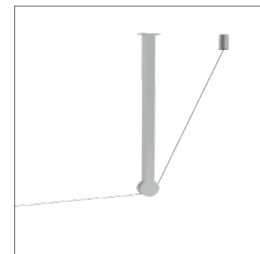
Molle di fissaggio (8 pezzi)  
*Fixing springs (8 pieces)*



1\* Cod. ACC.0325.0 molla ancoraggio lamp.-cavo/  
*anchor spring lamp-cable*

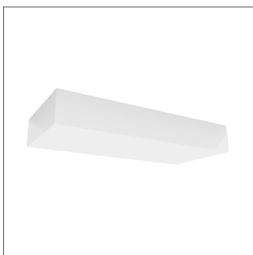
2\* Cod. ACC.0326.0 molla ancoraggio lamp.-lamp.  
 (4 coppie)  
*anchor spring lamp-lamp (4 couples)*

Staffa di fissaggio a soffitto 600 mm  
*Ceiling fixing bracket 600 mm (23,622")*



Cod. ACC.0327.0

Box con alimentatore 90-295 V 24Vdc bianco  
*Box with power supply 90-295 V 24 Vdc white*



Cod. ACC.0328.0 100 W

Cod. ACC.0329.0 240 W

Cod. ACC.0341.0 320 W

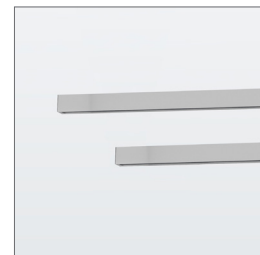
Coppia di tige 100 cm per barre rigide  
*100cm (39") long rods for supporting bars*



Cod. ACC.0332.0 sospensione / *suspension*

Cod. ACC.0340.0 alimentate / *powered*

Coppia di barre portanti 250 cm in alluminio anodizzato  
*Couple of supporting bars 250 cm (98") in anodized aluminium*



Cod. ACC.0331.0

Potenziometro di regolazione  
*Adjustment potentiometer*



Cod. ACC.0339.0

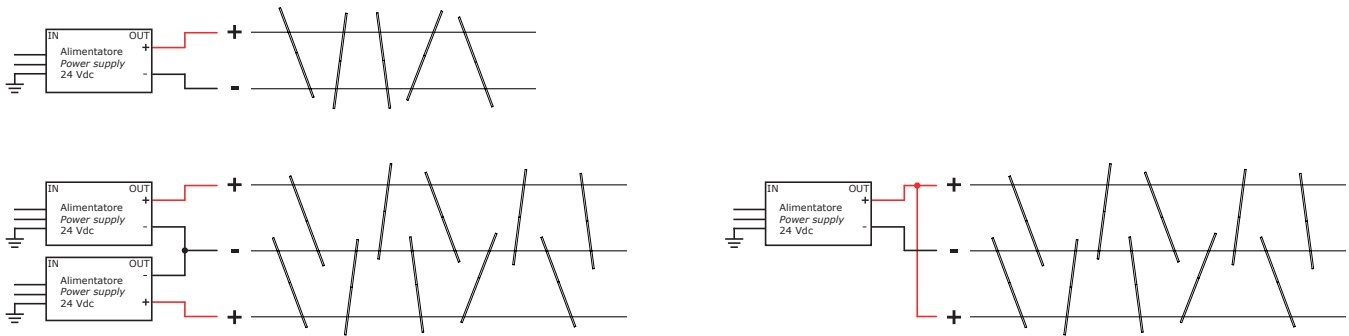
Coppia cavi di alimentazione trasparenti 150 cm con rosone bianco  
*Couple of transparent power supply cables 150 cm (59") with white rose*



Cod. ACC.0335.0

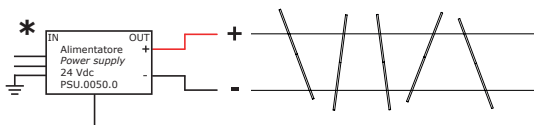
**SCHEMI DI CABLAGGIO / WIRING DIAGRAMS**

**Collegamento in parallelo con alimentatori a tensione costante - ON/OFF**  
**Parallel connection for constant voltage power supply - ON/OFF**



**Nota:** Nella versione multi cavi, il carico massimo totale sul cavo centrale è di 300 W.  
**Note:** In the multi-cable version, the maximum total load on the central cable is 300 W.

**Collegamento in parallelo con alimentatori a tensione costante - DIMMER**  
**Parallel connection for constant voltage power supply - DIMMER**



- \* - Potenziometro / Potentiometer ACC.0339.0
- Segnale 0-10 / 0-10 signal
- DALI su richiesta / DALI on request

**ALIMENTATORI A TENSIONE COSTANTE 24 Vdc / CONSTANT VOLTAGE 24 Vdc POWER SUPPLY UNITS**

	Codice Code	Voltaggio Voltage	Peso e dimensioni Weight and dimensions	Omologazioni Homologation
	<b>PSU.0007.0</b>	110÷264V 96W 50/60Hz	520g 201x71x35 mm	IP20 - CE UR - SELV
	<b>PSU.0017.0</b>	220÷240V 150W 50/60Hz	320g 240x61x49 mm	IP20 - CE KEMA KEUR SELV
	<b>PSU.0013.0</b>	110÷264V 240W 50/60Hz	1030g 125x114x63 mm guida DIN / DIN rail	IP20 - CE UL - SELV
	<b>PSU.0021.0</b>	110÷305V 320W 50/60Hz	1900g 252x90x44 mm	IP65 - CE UR - SELV
	<b>PSU.0009.0</b>	110÷295V 96W 50/60Hz	1000g 222x68x39 mm	IP67 - CE UR - SELV
	<b>PSU.0010.0</b>	110÷295V 150W 50/60Hz	1000g 222x68x39 mm	IP67 - CE UR - SELV
	<b>PSU.0011.0</b>	110÷305V 240W 50/60Hz	1300g 244x68x39 mm	IP67 - CE UR - SELV

**ALIMENTATORE A TENSIONE COSTANTE 24 Vdc DIMMERABILE**  
**CONSTANT VOLTAGE 24 Vdc DIMMABLE POWER SUPPLY UNIT**

	<b>* PSU.0050.0</b>	100÷605V 120W dimmerabile PWM PWM dimmable	191x63x38 mm	IP67 - CE cURus - ENEC - SELV
--	---------------------	---	--------------	----------------------------------

**ALDABRA**<sup>®</sup>  
[www.aldabra.it](http://www.aldabra.it)  
[www.aldabrausa.com](http://www.aldabrausa.com)