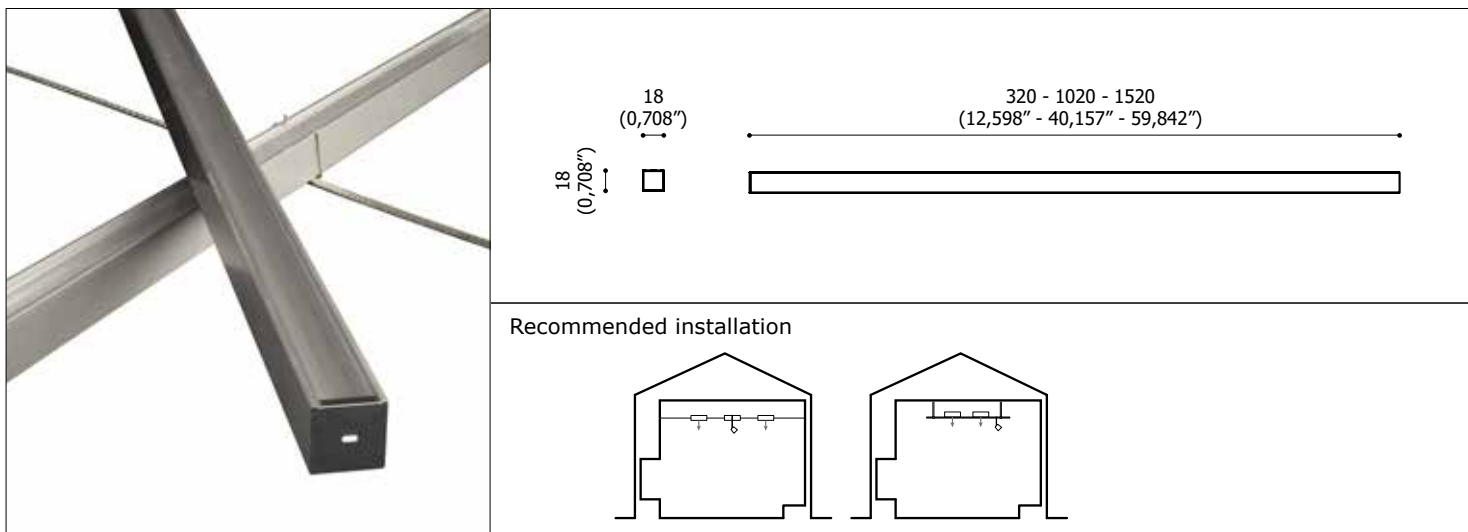


STIK Monochromatic DATA-SHEET



PRODUCT DESCRIPTION:

Professional innovative LED lighting system designed for indoor applications, it allows the creation of infinite combinations and shapes.
Body material in aluminium with screen in polycarbonate.

TECHNICALS FEATURES:

Materials	Aluminium; Polycarbonate
Finishes	Anodized aluminium; Brushed copper; Polished chrome
Power Supply	24 Vdc constant voltage ($\pm 5\%$)
Light Source	Mid-Power LED 90 - 110 lm/W
Pitch	1,8 mm (0,07")
Power	Monoemission: 20 W/m; biemission: 40 W/m
Color Temperature	2700 K; 3000 K; 4000 K
Ra	> 90
Chromatic Selection	Mac-Adam 3-step
Lifetime	> 50000 h (TM21)
Optics	Satin screen
UGR	< 19
Tc metal body	< 90 °C (194 °F)
Ta operating temperature	-20 ÷ 40 °C (-4 ÷ 104 °F)
Functions	On/Off, dimmable
Cable	steel cable 3 mm - braided tinned copper coating 2 mm ²
Weigth	light bars 386 g/m (13.6 oz/m)
Installations	Wall or ceiling suspended with cables of electrified bars
Norms	60598-1 ; 60598-2 and its parts



NOTE:
Power supplies, control interfaces and dimming to be orderd separately. Aldabra driver consumption is equal to 15% of the fixture nominal power.
Photometric data available at www.aldabra.it

STIK Monochromatic DATA-SHEET

GENERAL FEATURES:

	version	power (W)	length mm (in)	pitch mm (in)
STI.01.SXXXX.0	Monoemission	20	1020 (40,157")	1,8 (0,07")
STI.03.SXXXX.0	Monoemission	30	1520 (59,842")	1,8 (0,07")
STI.05.SXXXX.0	Symmetrical biemission	40	1020 (40,157")	1,8 (0,07")
STI.06.SXXXX.0	Symmetrical biemission	60	1520 (59,842")	1,8 (0,07")
STI.07.SXXA1.0⁽¹⁾	Monoemission	6	320 (12,598")	1,8 (0,07")
STI.10.S00A1.0⁽¹⁾	Structure bar	-	320 (12,598")	-

OPTICAL FEATURES:

STI.XX.SXXXX.0 Satin screen

LED FEATURES:

	Mid-Power LED	lm/m ⁽²⁾ monoemmission	lm/m ⁽²⁾ symmetrical biemission	Ra	Chromatic selection
STI.XX.S27XX.0	2700 K warm white	1167	2176	>90	MacAdam 3-step
STI.XX.S30XX.0	3000 K warm white	1336	2491	>90	MacAdam 3-step
STI.XX.S40XX.0	4000 K neutral white	1459	2720	>90	MacAdam 3-step

⁽²⁾ delivered luminous flux (satin screen)

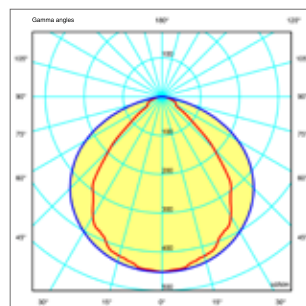
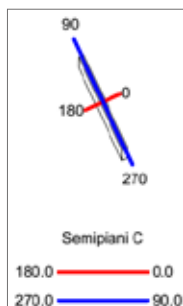
FINISHES FEATURES:

STI.XX.SXXA1.0	Anodized aluminium
STI.XX.SXXM1.0	Brushed copper
STI.XX.SXXM2.0	Polished chrome

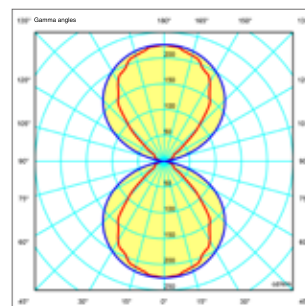
NOTE:

Power supply recommended by Aldabra must be used.
Max connectable power 300W.

⁽¹⁾ Other finishes are available on request.



Mono emission



Symmetrical biemission

GENERAL INFORMATIONS:

Kindly note that atmospheric agents (such as lightnings, etc) , electrostatics charges or disturbances on the installation not caused by Aldabra lighting fixtures and Led drivers indicated by Aldabra itself, may cause damages on the fixtures. It is necessary that the electrical installation where the LED lighting fittings and their power supply units and control gears are installed must be equipped with proper devices for the protection and suppression of transient phenomena (SPD, isolation transformer, etc...). Such devices must be coordinated with the other protections of the installation; on this theme, it's necessary to refer to the electrical installations norms which are in force in each country.

STIK Monochromatic DATA-SHEET

ACCESSORIES:

Anchoring Design base for wall or ceiling cables in matt white painted steel



Cod. ACC.0321.0

Stretcher Design base for wall or ceiling cables in matt white painted steel



Cod. ACC.0322.0

Basic stretcher and anchoring kit (couple) for cables wall - ceiling in galvanized steel



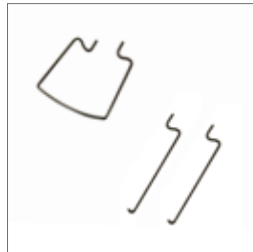
Cod. ACC.0338.0

Tie-rod in nicked copper - steel 3 mm 20 Ampere



Cod. ACC.0323.0 15 metres
Cod. ACC.0324.0 50 metres

Fixing springs (8 pieces)



Cod. ACC.0325.0 lamp to cable
Cod. ACC.0326.0 lamp to lamp (4 couples)

Ceiling fixing bracket 600 mm (23,622")



Cod. ACC.0327.0

Box with power supply 90-295 V 24 Vdc white



Cod. ACC.0328.0 100 W
Cod. ACC.0329.0 240 W
Cod. ACC.0341.0 320 W

100cm (39") long rods for supporting bars



Cod. ACC.0332.0 suspension
Cod. ACC.0340.0 powered

Couple of supporting bars 250 cm (98") in anodized aluminium



Cod. ACC.0331.0

Adjustment potentiometer



Cod. ACC.0339.0

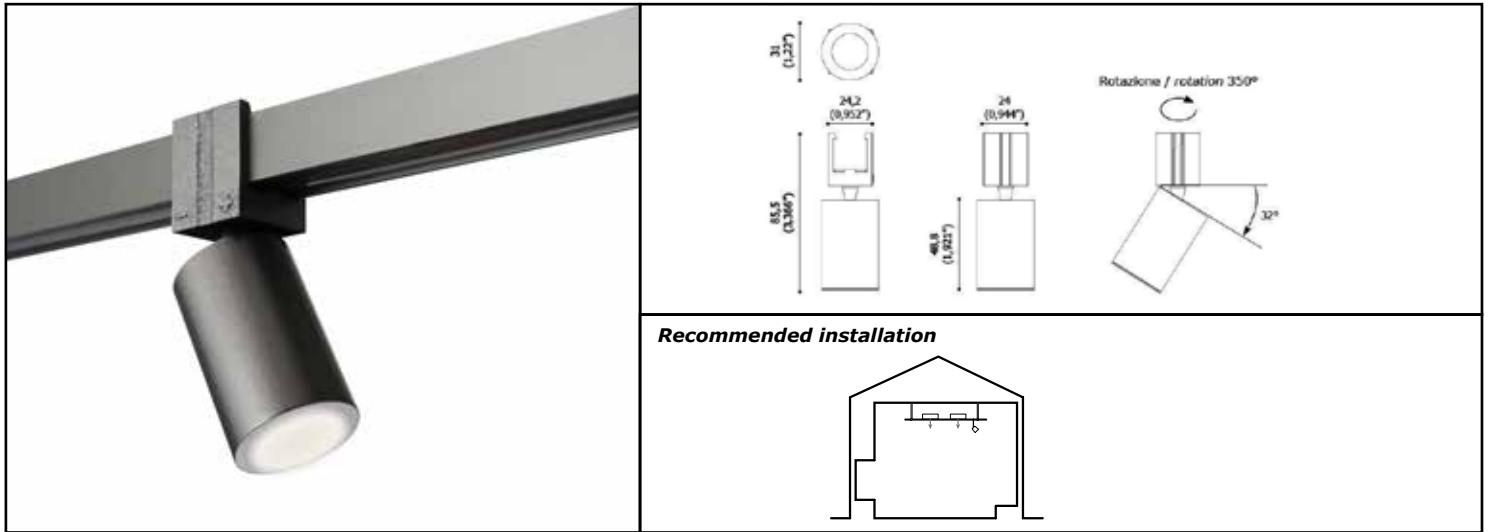
Couple of transparent power supply cables 150 cm (59") with white rose



Cod. ACC.0335.0

STIK MICROSPOT 31 Monochromatic

DATA-SHEET



PRODUCT DESCRIPTION:

Professional compact floodlight to clip on Stik lighting bars.
Anticorodal aluminium alloy EN AW-6060 body
UV resistance of all materials.

TECHNICALS FEATURES:

Materials	anticorodal aluminium alloy EN AW-6060
Finish	painted aluminium
Power Supply	constant voltage 24 Vdc (±5%)
Power	5 W
Light Source	High Power LED
Color Temperature	2700 K; 3000 K; 4000 K
Ra	> 90
Chromatic Selection	Mac-Adam 2-step
Lifetime	> 50000 h (TM21)
Optics	medium beam (25°) - wide beam (46°)
Ta operating temperature	-20 ÷ 40 °C (-4 ÷ 104 °F)
Functions	On/Off
Weigth	65 g (2.29 oz)
Installations	hooked to the lighting bars
Norms	60598-1 ; 60598-2 and its parts



NOTE:
Power supplies, control interfaces and dimming to be orderd separately. Aldabra driver consumption is equal to 15% of the fixture nominal power.
Photometric data available at www.aldabra.it

STIK MICROSPOT 31 Monochromatic DATA-SHEET

GENERAL FEATURES:

High Power LED

STI.90.XXXG1.0

5 W

OPTICAL FEATURES:

STI.90.FXXG1.0

medium beam 25°

STI.90.WXXG1.0

wide beam 46°

LED FEATURES:

	High Power LED	lm/W	Ra	Chromatic selection
STI.90.X27G1.0	2700 K warm white	TBD	>90	MacAdam 2-step
STI.90.X30G1.0	3000 K warm white	TBD	>90	MacAdam 2-step
STI.90.X40G1.0	4000 K neutral white	TBD	>90	MacAdam 2-step

FINISHES FEATURES:

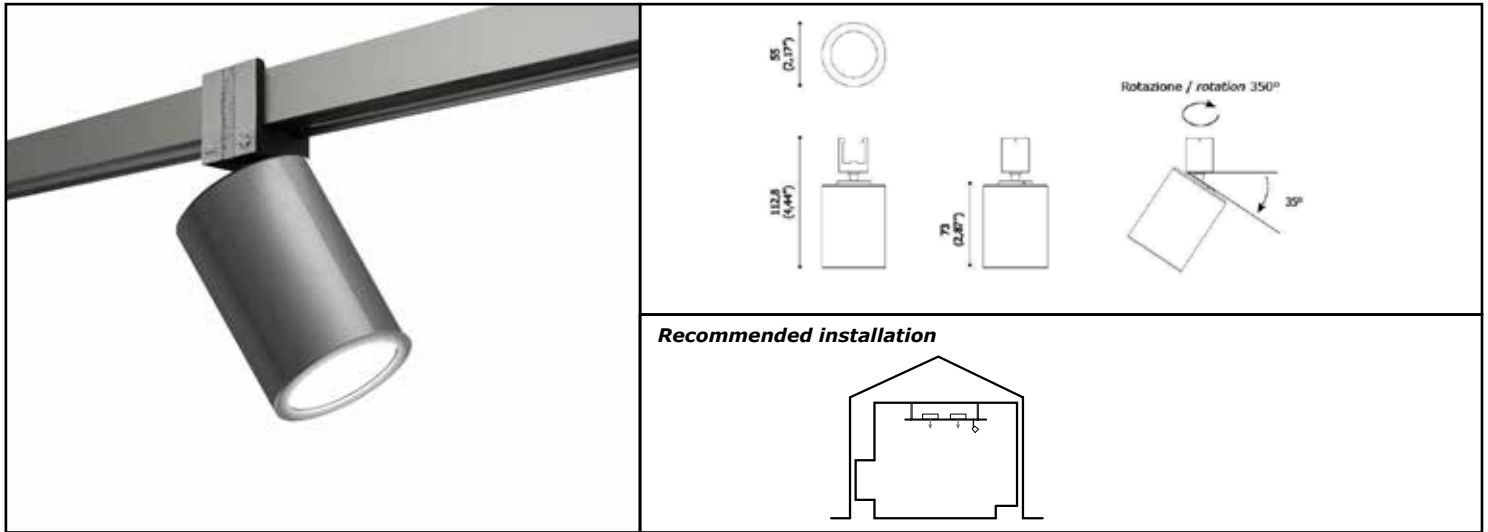
STI.90.XXXG1.0

Painted aluminium

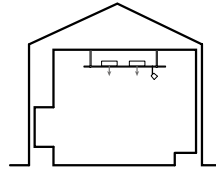
GENERAL INFORMATIONS:

Kindly note that atmospheric agents (such as lightnings, etc) , electrostatics charges or disturbances on the installation not caused by Aldabra lighting fixtures and Led drivers indicated by Aldabra itself, may cause damages on the fixtures. It is necessary that the electrical installation where the LED lighting fittings and their power supply units and control gears are installed must be equipped with proper devices for the protection and suppression of transient phenomena (SPD, isolation transformer, etc...). Such devices must to be coordinated with the other protections of the installation; on this theme, it's necessary to refer to the electrical installations norms which are in force in each country.

STIK SPOT 55 Monochromatic DATA-SHEET



Recommended installation



PRODUCT DESCRIPTION:

Professional compact floodlight to clip on Stik lighting bars.
Anticorodal aluminium alloy EN AW-6060 body
UV resistance of all materials.

TECHNICALS FEATURES:

Materials	anticorodal aluminium alloy EN AW-6060
Finish	painted aluminium
Power Supply	constant voltage 24 Vdc ($\pm 5\%$)
Power	10 W
Light Source	COB LED
Color Temperature	2700 K; 3000 K; 4000 K
Ra	> 90
Chromatic Selection	Mac-Adam 2-step
Lifetime	> 50000 h (TM21)
Optics	narrow beam (15°) - medium beam (25°) - wide beam (46°)
Ta operating temperature	-20 ÷ 40 °C (-4 ÷ 104 °F)
Functions	On/Off; dimmable
Weigth	250 g (8.82 oz)
Installations	hooked to the lighting bars
Norms	60598-1 ; 60598-2 and its parts



NOTE:
Power supplies, control interfaces and dimming to be orderd separately. Aldabra driver consumption is equal to 15% of the fixture nominal power.
Photometric data available at www.aldabra.it

STIK SPOT 55 Monochromatic DATA-SHEET

GENERAL FEATURES:

COB LED

STI.91.XXXG1.0 10 W

OPTICAL FEATURES:

STI.91.MXXG1.0 narrow beam 15°

STI.91.FXXG1.0 medium beam 25°

STI.91.WXXG1.0 wide beam 46°

LED FEATURES:

	High Power LED	lm/W	Ra	Chromatic selection
STI.91.X27G1.0	2700 K warm white	TBD	>90	MacAdam 2-step
STI.91.X30G1.0	3000 K warm white	TBD	>90	MacAdam 2-step
STI.91.X40G1.0	4000 K neutral white	TBD	>90	MacAdam 2-step

FINISHES FEATURES:

STI.91.XXXG1.0 Painted aluminium

GENERAL INFORMATIONS:

Kindly note that atmospheric agents (such as lightnings, etc) , electrostatics charges or disturbances on the installation not caused by Aldabra lighting fixtures and Led drivers indicated by Aldabra itself, may cause damages on the fixtures. It is necessary that the electrical installation where the LED lighting fittings and their power supply units and control gears are installed must be equipped with proper devices for the protection and suppression of transient phenomena (SPD, isolation transformer, etc...). Such devices must to be coordinated with the other protections of the installation; on this theme, it's necessary to refer to the electrical installations norms which are in force in each country.