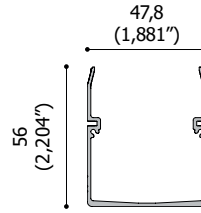


CASSEFORME / RECESSING BOXES

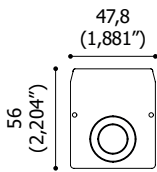
- CSF.0092.0** Cassaforma senza bordo / *trimless recessing box 145 mm (5,708")*
- CSF.0073.0** Cassaforma senza bordo / *trimless recessing box 520 mm (20,472")*
- CSF.0074.0** Cassaforma senza bordo / *trimless recessing box 1020 mm (40,157")*
- CSF.0075.0** Cassaforma senza bordo / *trimless recessing box 1520 mm (59,842")*
- CSF.0076.0** Cassaforma senza bordo / *trimless recessing box 2020 mm (79,527")*



ACCESSORI / ACCESSORIES

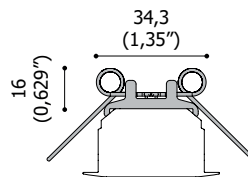
ACC.0075.0

coppia di testate per cassaforma
couple of end caps for recessing box



ACC.0079.0

molla di fissaggio per controsoffitto / *fixing spring for false ceiling*

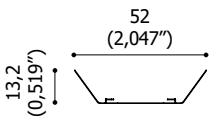


Spessore minimo / massimo per il montaggio 1 / 24 mm
Minimum / maximum thickness for installation 1 / 24 mm (0,039" / 0,944")

Applicazione a terra <i>Floor installation</i>	2 molle / <i>springs: 520mm (20,472") - 1020 mm (40,157")</i>
Applicazione a soffitto <i>Ceiling installation</i>	3 molle / <i>springs: 1520mm (59,842") - 2020 mm (79,527")</i>

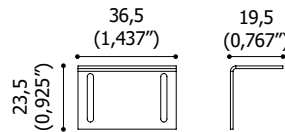
ACC.0070.0

molla di fissaggio per cassaforma e mensola
fixing spring for recessing box and shelf



ACC.0116.0

kit staffe per cassaforma (4x)
brackets for recessing box kit (4x)



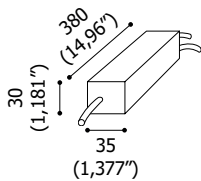
ACC.0003.0

kit di allineamento casseforme
alignment kit for housing boxes



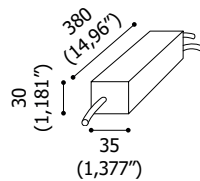
ACC.0027.1 *

box di alimentazione 220-240 Vac 50/60 Hz
30W SELV - ENEC - CE - IP67
*power supply box 220-240 Vac 50/60 Hz
30W SELV - ENEC - CE - IP67*



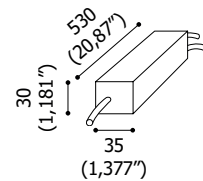
ACC.0029.1 *

box di alimentazione 220-240 Vac 50/60 Hz
60W SELV - ENEC - CE - IP67
*power supply box 220-240 Vac 50/60 Hz
60W SELV - ENEC - CE - IP67*



ACC.0078.1 *

box di alimentazione 220-240 Vac 50/60 Hz
100W SELV - ENEC - CE - IP67
*power supply box 220-240 Vac 50/60 Hz
100W SELV - ENEC - CE - IP67*



* Versioni dimmerabili 1-10 V disponibili su richiesta / *dimnable 1-10 V versions available on request*

ACC.0083.0

kit staffe di fissaggio box di alimentazione per
linea simmetrico
*power supply box fixing brackets for Linea
symmetrical version*

ACC.0084.0

kit staffe di fissaggio box di alimentazione per
linea asimmetrico
*power supply box fixing brackets for Linea
asymmetrical version*

ACC.0028.0

cavetto di sicurezza per montaggio a soffitto
*safety steel wire for ceiling installation for
preventing accidental fall*